



Jiangsu Runda PV Co.,Ltd.

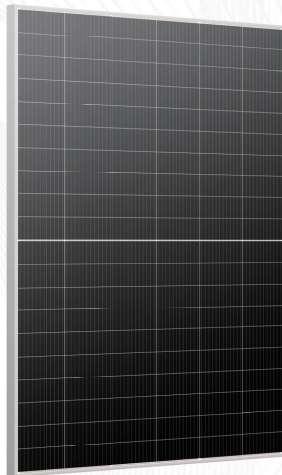
Tarzan Pro Max

N-Type

S9-120GAHT 625~635W

Bifacial Dual Glass

Mono Module



645W

Maximum Power Output

22.79%

Maximum Module Efficiency

0~+5W

Power Output Tolerance

IEC61215, IEC61730
ISO9001:2015: Quality Management System
ISO14001:2015: Environment Management System
ISO45001:2018: Occupational health and safety management systems



10%-30% Additional Power Generation

- 30 years lifespan brings 10-30% additional power generation comparing with conventional P-type module



No B-O LID

- Excellent anti-LeTID & anti-PID performance. Low power degradation, high energy yield.



Excellent Temperature Coefficient

- Excellent temperature coefficient (Pmax): -0.26%/°C, ensures higher generation in extreme temperature areas



Outstanding Low Light Performance

- Higher power output even under low-light environments like on cloudy or foggy days.



Up To 85% Bifaciality

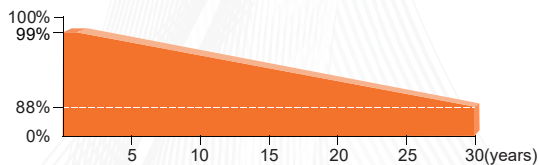
- Higher power output and lower BOS cost.



Enhanced Mechanical Load

- Certified to withstand: wind load (2400 Pascal) and snow load (5400 Pascal)

Linear Performance Warranty



15 Years Product Warranty on Materials and Workmanship

30 Years Linear Performance Warranty

0.375% Subsequent Annual Degradation

Tel:+86-0510-83801000

Fax:+86-0510-83802000

Web: www.rundapv.com

E-mail: sales@rundapv.com

Add: Yanxiang Road 108, Ehu Town, Xishan District, Wuxi City, Jiangsu Province, P.R.China



Balerina-GreenEnergy s.r.o.
Přestavlká 1447
295 01 Mnichovo Hradiště
Česká republika

Tel.: 326 773 391
E-mail: info@balerina-greenenergy.cz
www.balerina-greenenergy.cz





Tarzan Pro Max

RS625~645S9-120GAHT



Jiangsu Runda PV Co.,Ltd.

Electrical Properties(STC*)

Power Output(Wp)	625	630	635	640	645
Max Power Tolerance(W)	0-5	0-5	0-5	0-5	0-5
Module Efficiency(%)	22.08	22.26	22.44	22.61	22.79
Voltage Mpp-Vmpp(V)	38.23	38.39	38.55	38.72	38.88
Current Mpp-Impp(A)	16.35	16.41	16.47	16.53	16.59
Voltage Open Circuit-Voc(V)	44.92	45.08	45.23	45.38	45.54
Short Circuit Current-Isc(A)	17.23	17.29	17.35	17.41	17.47

*STC: Irradiance 1000W/m², Cell Temperature 25°C, AM 1.5

Electrical Properties(NOCT*)

Power Output(Wp)	523	528	533	537	541
Voltage Mpp-Vmpp(V)	37.25	37.45	37.64	37.76	37.89
Current Mpp-Impp(A)	14.04	14.10	14.16	14.22	14.28
Voltage Open Circuit-Voc(V)	43.67	43.83	43.99	44.15	44.31
Short Circuit Current-Isc(A)	14.91	14.97	15.03	15.09	15.15

*NOCT: Irradiance 800W/m², Ambient Temperature 20°C, Wind Speed 1m/s

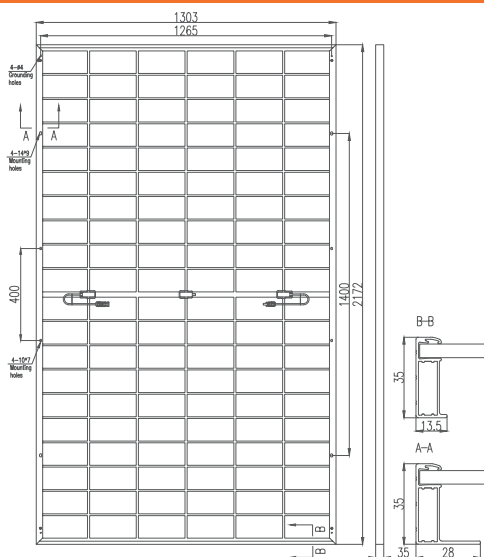
With Different Power Generation Gain (regarding 635W as an example)

Power Gain (%)	Power Output (Wp)	Voltage Mpp-Vmpp (V)	Current Mpp-Impp (A)	Voltage Open Circuit-Voc (V)	Short Circuit Current-Isc (A)
10	699	38.55	18.12	45.23	19.09
15	730	38.55	18.94	45.23	19.95
20	762	38.55	19.77	45.23	20.82
25	794	38.55	20.59	45.23	21.69
30	826	38.55	21.41	45.23	22.56

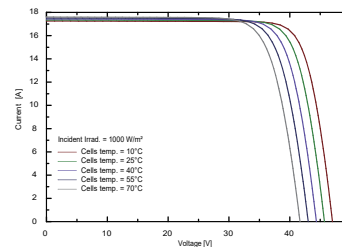
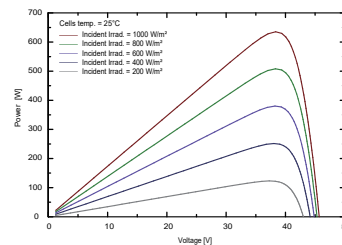
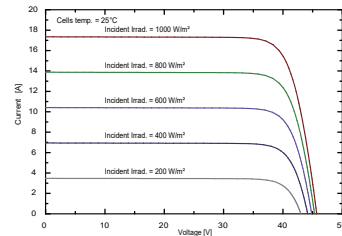
Packaging Configuration

Packing Type	40'HQ
Piece/Pallet	31
Piece/Container	558

Engineering Drawing (mm)



Characteristic Curves(635W)



Mechanical Properties

Cell Size	HJT Mono 210mm*105mm
Number of Cells	120 [2 x (11 x 6)]
Module Dimension	2384*1303*35mm
Weight	35kg
Front Glass	2.0mm, Anti-Reflection Coating
Rear Glass	2.0mm, Heat Strengthened Glass
Frame	Anodized Aluminium Alloy
Junction Box	IP68 (3 diodes)
Cable Length	TUV 1x4.0mm ² , 300mm or Customized length

Operating Properties

Operating Temperature	-40°C~+85°C
Maximum System Voltage (V)	1500V DC (IEC)
Maximum Series Fuse Rating (A)	30
Power Tolerance	0~+5W
Bifaciality	80±5%

Temperature Coefficient

Temperature Coefficient of Pmax	-0.26%/°C
Temperature Coefficient of Voc	-0.24%/°C
Temperature Coefficient of Isc	0.033%/°C
Nominal Operating Cell Temperature (NOCT)	43±2°C

Specifications included in this datasheet are subject to change without notice.

Balerina-GreenEnergy s.r.o.
Přestavlká 1447
295 01 Mnichovo Hradiště
Česká republika

Tel.: 326 773 391
E-mail: info@balerina-greenenergy.cz
www.balerina-greenenergy.cz

