

## NE-1000M5 Wind Turbine

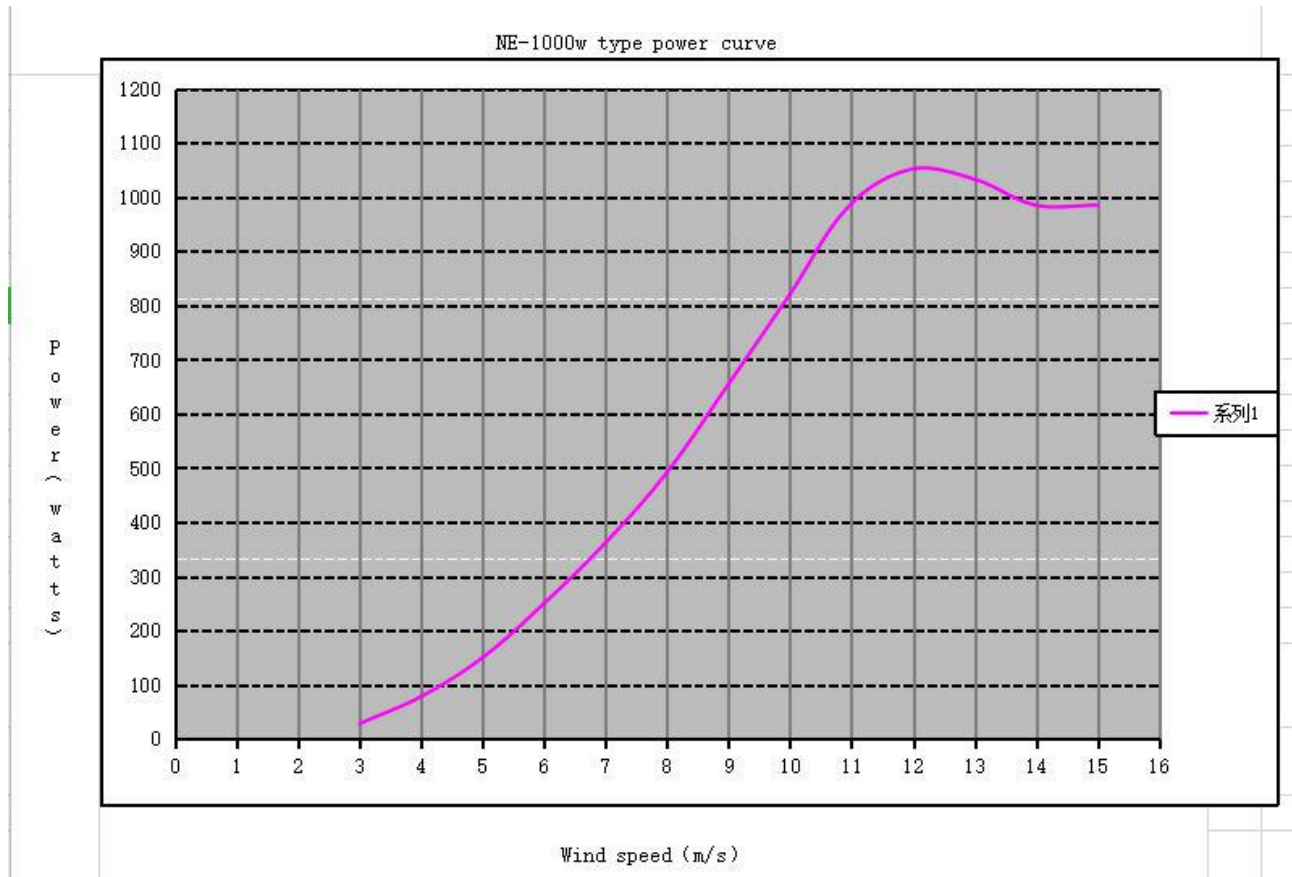


<b>NE-1000 M5</b>	
<b>Performance</b>	
Rated power	1000w
Peak power	1300w
Start-up wind speed	2m/s
Working wind speed	4-30m/s
Survival wind speed	45m/s
<b>Rotor</b>	
Rotor diameter	2.2m
Blade	3pcs reinforced fiber glass
Blade length	110cm
Shell material	Casting aluminum alloy
Rated RPM	600r/m
Weight	26kg
<b>Others</b>	
Generator type	3-phase AC PMG
Speed regulation & protection	Electromagnetic brake
Rated voltage	24/48V
Tower type	6m guy wire tower
Working temperature	-40°C to 80°C



## Power curve

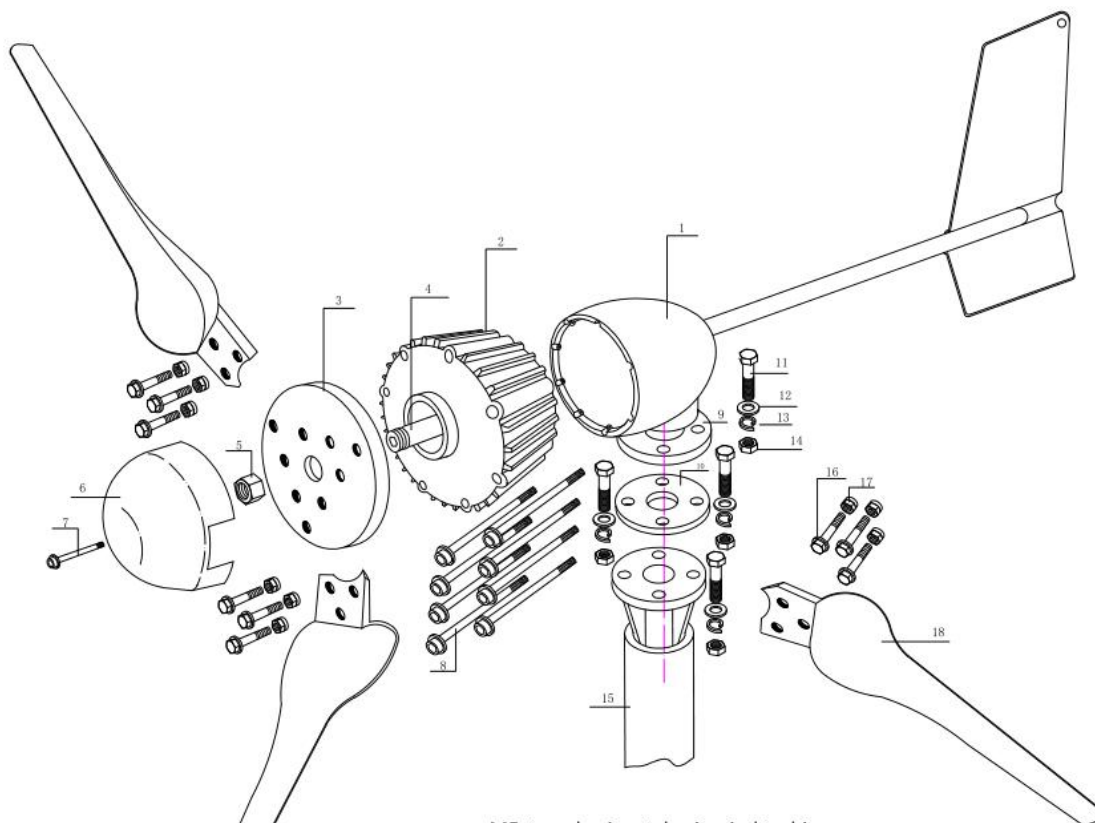
Power (W) VS wind speed (m/s)



Monthly output:

Wind turbine		Wind speed	Monthly Output
		m/s	kwh
NE-1kw M5	1000w 24/48v	6-7	180-266kwh





M5 type horizontal axis wind turbine

1. Back body 2. Front body 3. Hub 4. Boss rod 5. Anti-loose nut 6. Wind cap 7. Locking screw for cap 8. Locking screw for body 9. Turbine flange base 10. Rubber washer 11. Screw 12. flat washer 13. Spring washer 14. Nut 15. Steel Pipe bracket 16. Anti-loose nut 17. Stainless screw 18. Turbine blades